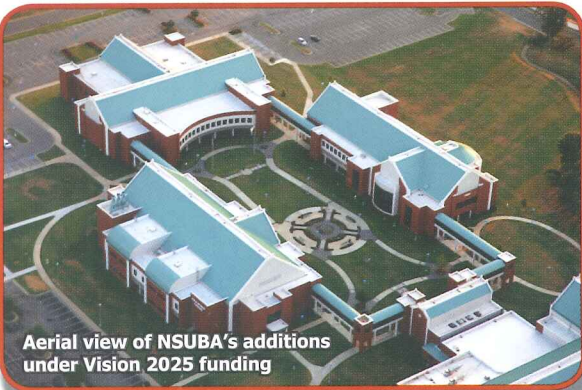


Northeastern State University: Four Years Later



Aerial view of NSUBA's additions under Vision 2025 funding

Northeastern State University opened its Broken Arrow (NSUBA) campus in 2001 welcoming 1,050 students. In 2003 Tulsa County voters approved \$26 million for the second phase of campus buildings with the passage of Vision 2025, adding a new science building, library media center and a classroom building. What did that buy us? Four years after construction of Phase II was completed, the answer goes much deeper than just bricks and mortar.

NSUBA dean Dr. Christee Jenlink loves her university, and it shows. In a recent conversation, she eagerly shared the NSUBA story.

In the year 2000, prior to the new campus opening, NSU classes were held at Broken Arrow South Intermediate High School and Tulsa Community College. At that time, the total NSUBA student population participated in only 513 credit hours of instruction.

Today, the campus is a thriving hub of activity offering bachelor's and master's degrees in 31 undergraduate and 17 graduate programs. The campus boasts 400,000 square feet of space, 87 classrooms and 81 resident faculty

members. In Spring 2011, NSUBA students participated in 24,105 credit hours of instruction.

The university now serves 3,400 NSU students, 300 Tulsa Community College

students and has 54 articulation agreements in place between NSU and TCC.

Graduate programs overall have seen significant growth. Today, 70% of all NSU graduate students are located on the NSUBA campus. And, over the last four years NSUBA has awarded approximately 2,500 bachelor's and master's degrees.

The College of Science and Health Professionals' enrollment has increased 14% with the addition of molecular biology, chemistry and a new post baccalaureate program designed to help degree-holders who are interested in entering medical school but lack the required science.

A new master's degree in nursing education began last fall. This program, combined with the articulation agreement from TCC, will allow a student to seamlessly transfer to NSU to complete their bachelor's degree then continue on to earn their master's degree in nursing education.

In January 2011, a speech pathology clinic for adults opened and a new speech pathology program is scheduled to begin next

year. Also scheduled to open next year is The College of Optometry's clinic for low-vision patients.

Last year, NSUBA hosted a veteran's fair designed to thank our veterans as well as promote the educational opportunities available. This year's fair will focus on helping veterans interested in starting a small business.

NSUBA also houses the Oklahoma Institute for Learning Styles which provides resources to aid teachers to identify students' individual learning styles to better reach each and every child. NSU recently hosted the International Learning Styles Network 34th Annual Institute Conference.

In the fall of 2011, NSU will launch the College of Extended Learning. The goal of this program is to increase college graduates in our community. It is specifically geared toward adults who started their degree but for whatever reason, never finished. It aims to give working adults flexibility. Increasing the number of college graduates by 1% would have a \$646 million economic impact on the community.

Today, as a direct result of the Vision 2025 investment, NSUBA

is able to offer more services and provide greater opportunities for our community to grow and reach its full potential. Congrats NSUBA!



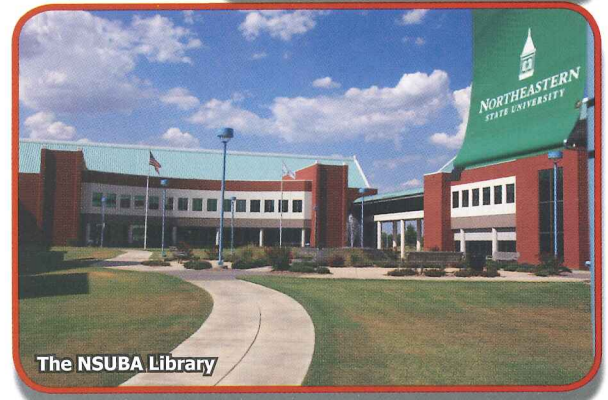
NSUBA Student Perspective

When 32 year old, single mom, Tasha Kemper chose to go back to college to finish her degree she chose NSUBA. Why? Flexibility, flexibility, flexibility. However, Tasha soon found there was so much more to her decision.

Not only could she complete her lower level courses at NSUBA (through articulation agreements with TCC) but she could also complete her core degree courses, something she found difficult at other institutions due to their lack of scheduling flexibility.

Small class sizes have allowed Tasha to develop personal relationships with faculty who directed her to opportunities such as the Volunteer Incentive Program which encourages student volunteerism; in Tasha's case, at Grace Hospice.

By utilizing day, evening, weekend, online and seminar courses, Tasha was able to complete her Bachelor's Degree in Psychology with a 3.2 GPA in July 2011. What's next for Tasha? Well, a Master's Degree of course.



The NSUBA Library

Regional Impact of Projects

Vision 2025 and "4 to Fix" the County programs have impacted our region through a variety of projects, both large and small, some flashy some basic. On both ends of the spectrum, these projects make an impact for our region economically and through the improvement of quality of life.

We all know that road projects don't always enjoy the headlines from public investments, but if you think roads aren't a big deal, just ask a couple of area mayors.

Sand Springs Mayor Mike Burdge said, "Vision 2025 and '4 to Fix' have really helped us with numerous road and infrastructure projects in Sand Springs. Our residents and businesses appreciate the improvements that have been made through our projects with Tulsa County."

Broken Arrow Mayor Mike Lester said, "These programs provided some

improvements to our transportation and quality of life in Broken Arrow. Roads are one of the most basic things we provide as local governments. The people expect good roads and with '4 to Fix' and Vision 2025, we're able to provide some of those improvements."

In Broken Arrow, a long stretch of Garnett Road has been improved between 61st Street and 81st Street including improvements to the intersections. Currently, 193rd East Avenue (County Line Road) is being widened and resurfaced. While many residents use this portion of 193rd, it is also a primary feeder to NSUBA.

There are more examples in Sand Springs, Broken Arrow, and throughout the county. Mayors Burdge and Lester will tell you roads constitute some of the most important projects going on in the region today.

Vision 2025 Financial Update

Sales Tax Projection & Performance

as of June 30, 2011

Projected: \$709,026,559.51

Collected: \$388,715,559.51

Construction Funding Sources

Total Authorized: \$575,500,000.00

Bonds: \$483,800,000.00

Cash: \$91,700,000.00

Bond Funding, Repayment & Debt Service

Bond Funds Borrowed: \$483,800,000.00

Bonds Repaid: \$214,560,000.00

Estimated Interest: \$146,285,397.50

Interest Paid: \$109,998,160.00

Authorized Construction Project Expenditures

Total Authorized: \$575,500,000.00

Project Expenditures: \$525,814,793.52

Senior Rebate

Initial Projection: \$5,000,000.00

Refunded: \$2,921,778.00

not to scale

Our Mission

We empower students to be socially responsible global citizens by creating and sustaining a culture of learning and discovery.

Our Vision

We will be the **partner of choice** in eastern Oklahoma, embracing the educational, cultural and economic challenges and opportunities of our global society.



Core Values

INTEGRITY

We model ethical and intellectual development by advancing honesty, human dignity, and accountability.

EXCELLENCE

We pursue continuous improvement individually and as a community.

CREATIVITY

We advance knowledge by exploring new possibilities through critical inquiry and intellectual freedom.

LEADERSHIP

We have a compelling commitment to serve, inspiring and preparing others to do the same.

COLLABORATION

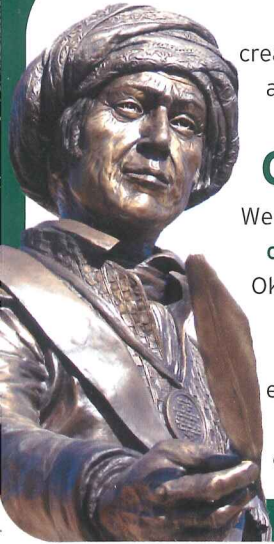
We build partnerships to create learning opportunities and promote educational and economic success.

Our Mission

We empower students to be socially responsible global citizens by creating and sustaining a culture of learning and discovery.

Our Vision

We will be the **partner of choice** in eastern Oklahoma, embracing the educational, cultural and economic challenges and opportunities of our global society.



Core Values

INTEGRITY

We model ethical and intellectual development by advancing honesty, human dignity, and accountability.

EXCELLENCE

We pursue continuous improvement individually and as a community.

CREATIVITY

We advance knowledge by exploring new possibilities through critical inquiry and intellectual freedom.

LEADERSHIP

We have a compelling commitment to serve, inspiring and preparing others to do the same.

COLLABORATION

We build partnerships to create learning opportunities and promote educational and economic success.